

SMITH RANCH HOMES

Challenges

Marin on ice after record cold strikes

1,000 phone calls pour in about water that w

How cold was it?

Marinwood11
Novato16
Point Reyes16
San Rafael19
Sausalito20
Petaluma13
Richmond24

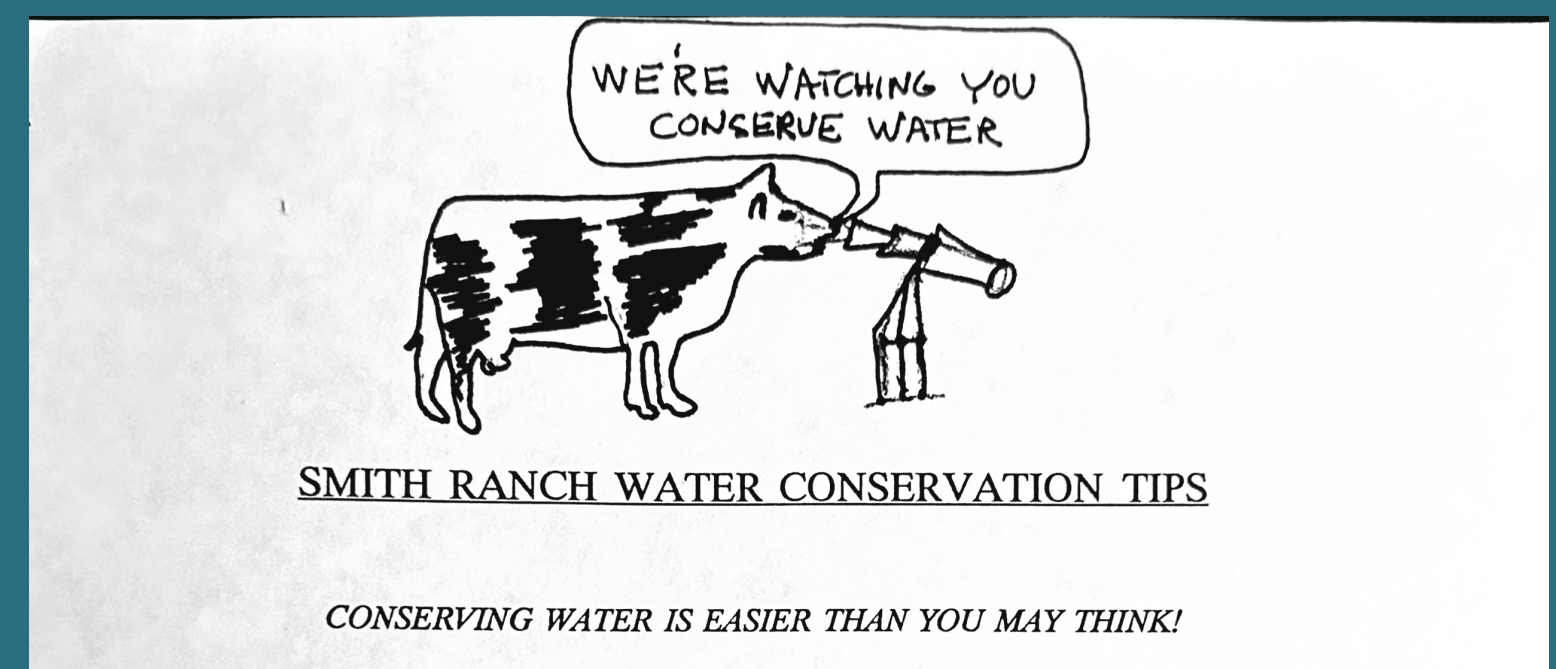
Before residents could celebrate the first Christmas at Smith Ranch, Marin County experienced its lowest recorded temperatures. Eleven degrees was recorded in Marinwood! Water pipes froze and burst all over the county, and Smith Ranch didn't escape. New plantings suffered, the stream froze, and a pipe burst in Building 300 3N, damaging it and the vacant units above and below.



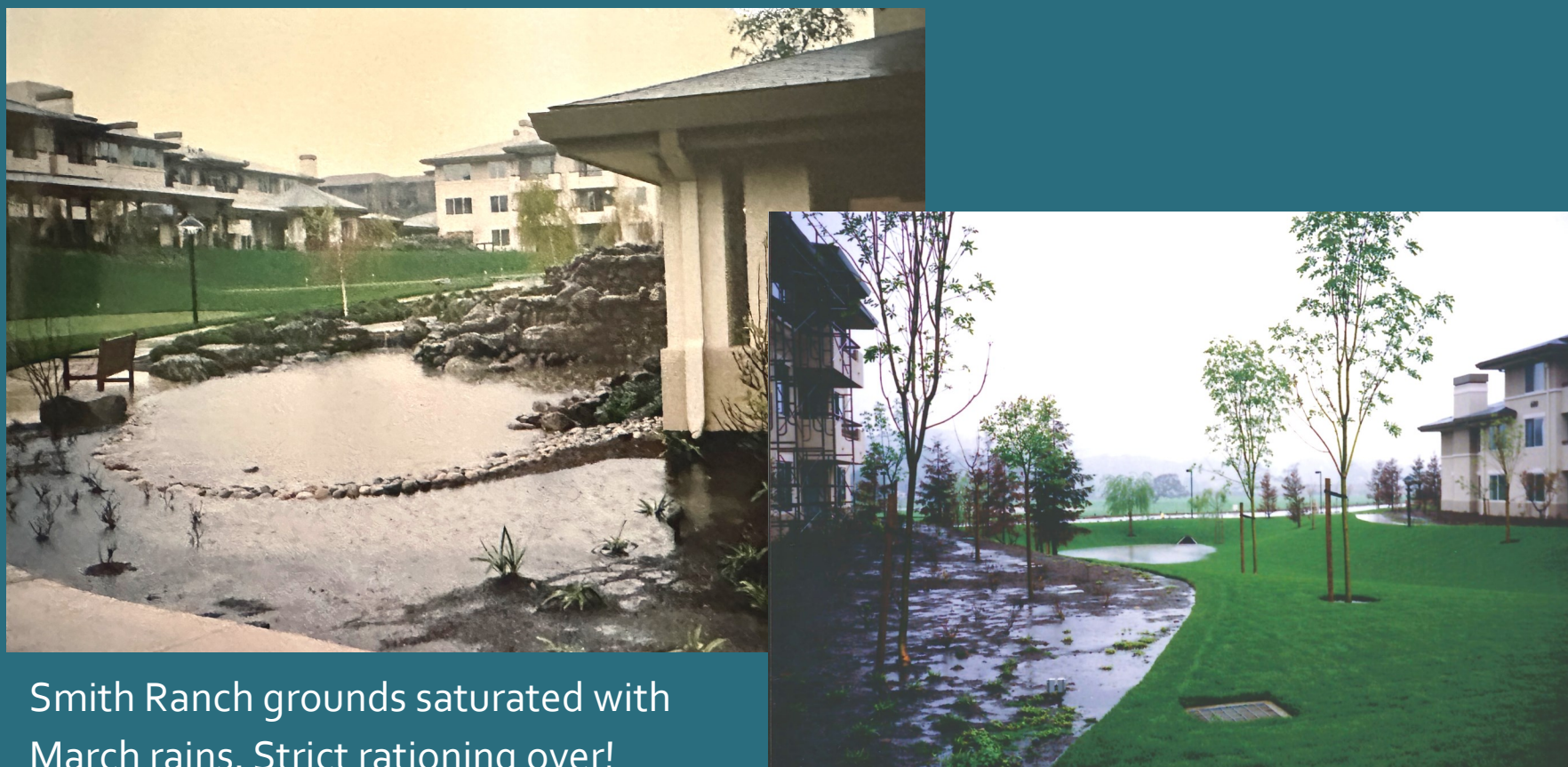
Smith Ranch grounds on December 22, 1990.

Water rationing to start

1987-1992 saw a six-year extended dry period. In early 1991, the reservoirs were near record low, and the water district restricted water usage to 50 gallons per day per person.



Smith Ranch residents were given tips about water usage and how to limit consumption to 50 gallons per person per day.



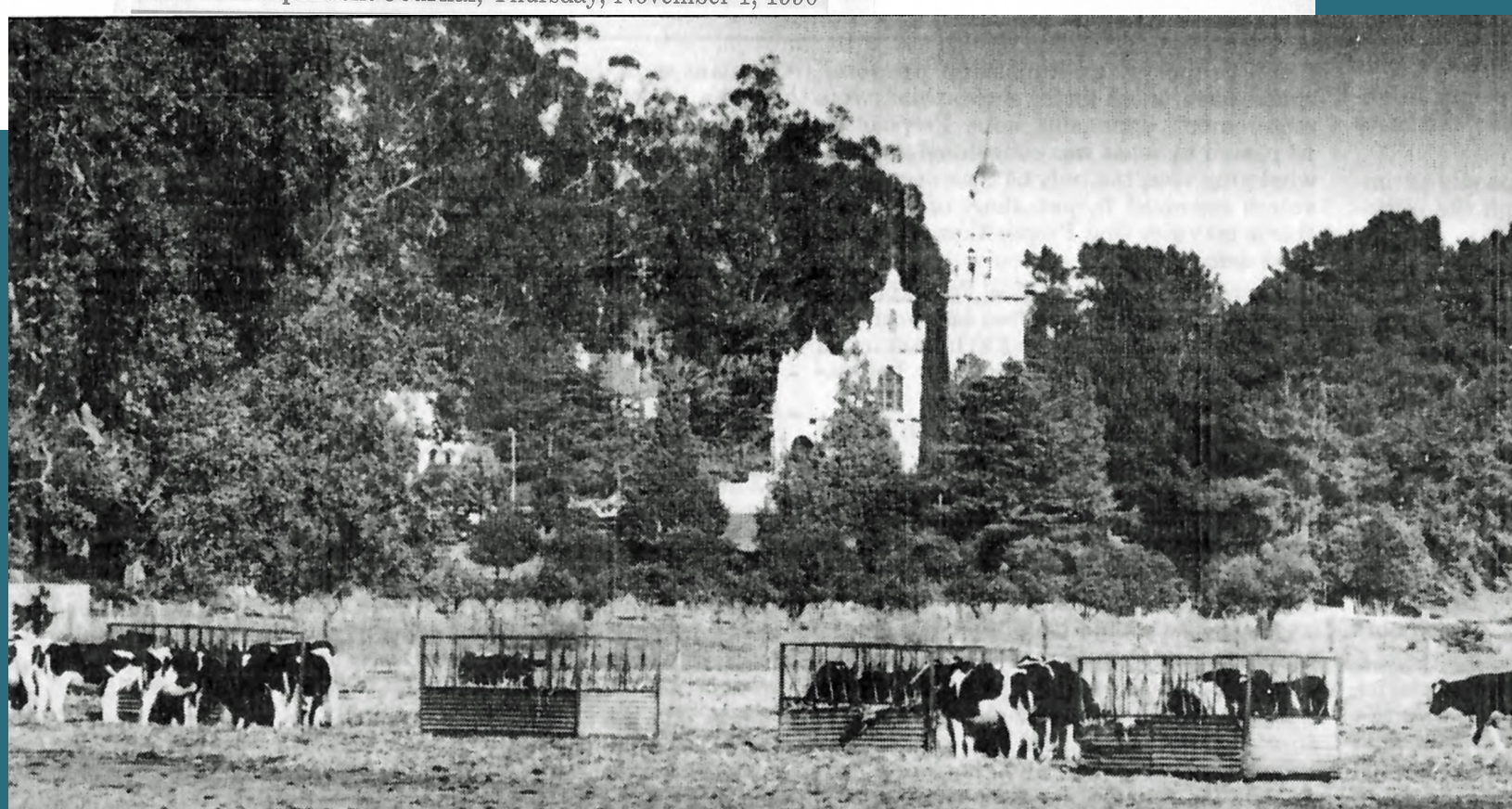
Smith Ranch grounds saturated with March rains. Strict rationing over!

Fortunately, the "March Miracle" of drenching rains boosted water storage by 25% and replaced the strict rationing with voluntary conservation.

Measure L focuses on land use

Bruising battle over 1,000 acres

Marin Independent Journal, Thursday, November 1, 1990



Our serene four footed neighbors

Of great interest and concern to Smith Ranch residents was a ballot measure in Fall 1990 to protect the scenic, bucolic Silveira Ranch and St. Vincent's land from development. The measure failed to pass, and the fate of the 340-acre Silveira Ranch was hotly contested for years after. In 2017, the County reached an agreement with the Silveiras to preserve the land for agriculture use for at least ten years.